

# PROJECT OF THE MONTH

March



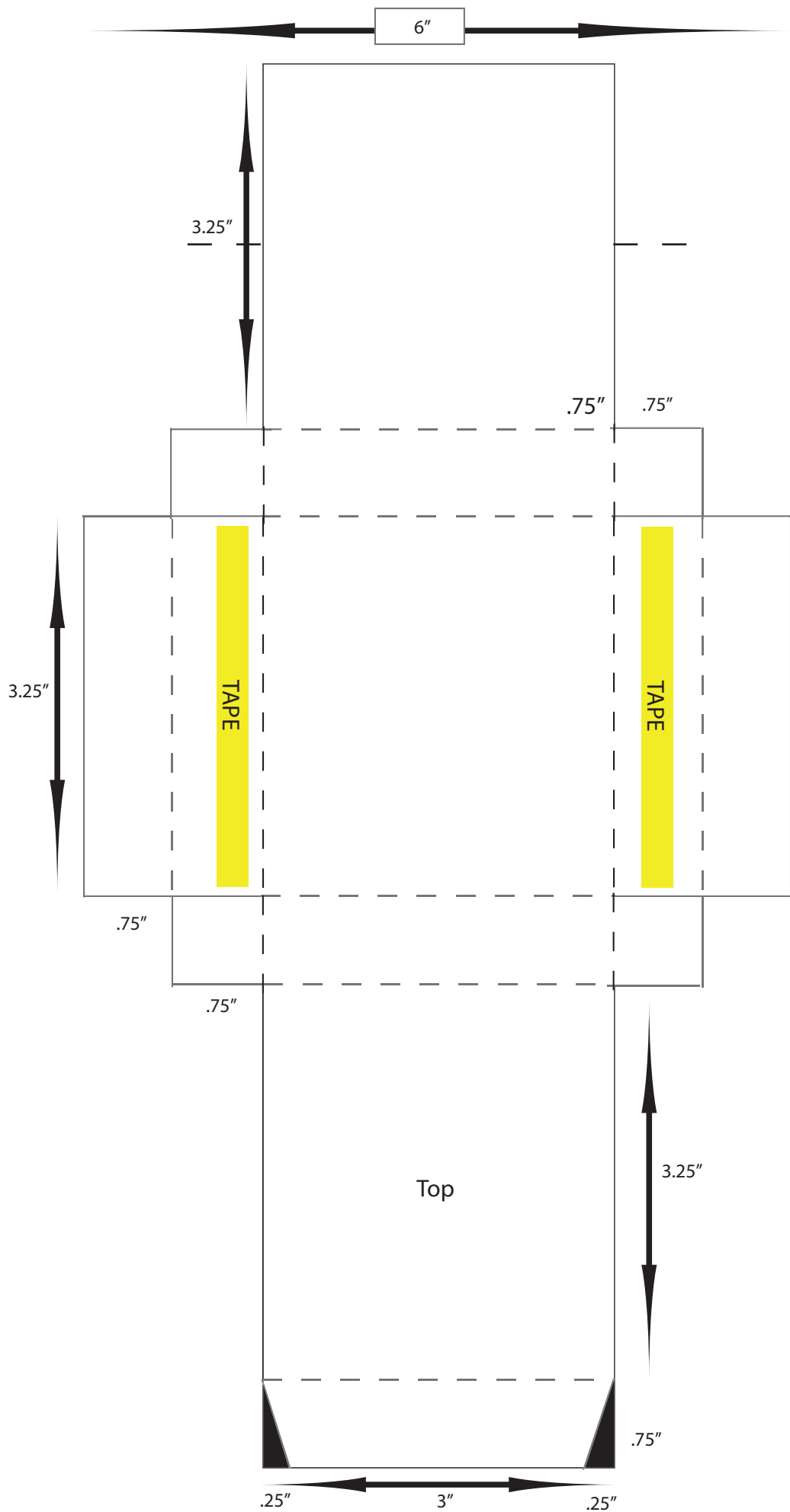
## OH SO EASY EASTER EASEL BOX

BY ALMA DE LA ROSA

### You'll need:

- Spring Fling Clearly Swanky Set (N-8635) or Easter Greetings (C-9666) Driving Mr. Carrots (F-9664)
- Black Ink
- Turquoise Paper  
1 @ 12" x 6"  
1 @ 3.5" x 2.5"
- 3" x 3.25" Patterned Cardstock
- 3" x 3.25" Yellow Paper
- White Paper  
1 @ 3" x 3.25"  
1 @ .75" x 2"
- 3" x 3.25" acetate
- Sushi Grass
- Flower punched from orange paper
- Buttons
- Paper piercer
- Twine
- Oval & Scalloped Oval Nestabilities
- Double-sided adhesive
- Dimensional glue dots
- Coloring Materials

- 1** Use the template as a guide to transfer measurements to the 12" x 6" Turquoise Paper. Cut on solid lines.
- 2** Use the oval nestabilities to cut a hole in the top of the box. Attach the acetate on the backside of the hole just cut.
- 3** Assemble the box on the dotted lines. Fold the easel flap forwards and underneath.
- 4** Place the oval nestabilities in a larger scalloped oval and cut a frame from the yellow paper. Attach to the top of the hole on the box.
- 5** Use the oval nestabilities to cut the shape from the white paper, and the scalloped oval from the remaining turquoise piece.
- 6** Stamp, color Driving Mr. Carrot on the white oval and attach to the turquoise scalloped oval.
- 7** Pierce around 3" x 3.25" patterned paper and adhere Driving Mr. Carrot to the top.
- 8** Attach the sushi grass to the bottom of the paper.
- 9** Stamp the sentiment on the .75" x 2" white stripe and trim the end into a flag.
- 10** Attach the flag to the oval. Thread a button and adhere to the flag.
- 11** Close the flap over the top of the box. Adhere the panel to the bottom half of the easel flap.
- 12** Place a threaded button on the orange flower shape and place on the top of the box. *(You may have to fold up the petals of the flowers to help hold the easel in place.)*
- 13** Fill with candy.



# OH SO EASY EASTER EASEL BOX

BY ALMA DE LA ROSA

March  
PROJECT  
OF THE  
MONTH

Shown @ 80%